

THE TWENTY FIRST TRIENNIAL MEETING OF COUNCIL
Sunday 15th May 2011, commencing at 09.00h
Hall 8 'Internationales Congress Centrum', Berlin, Germany

MINUTES

1. OPENING AND WELCOME

IFCC President Professor Graham Beastall welcomed representatives of IFCC Full Members, Corporate Members, Affiliate Members as well as all those present in the Council Meeting. He gave information on some housekeeping items during the meeting.

Minutes of 20th Council, Fortaleza, Brazil 2008

The President requested that the minutes of the previous Council meeting be approved. The Council approved the minutes.

2. PRESIDENT'S REPORT

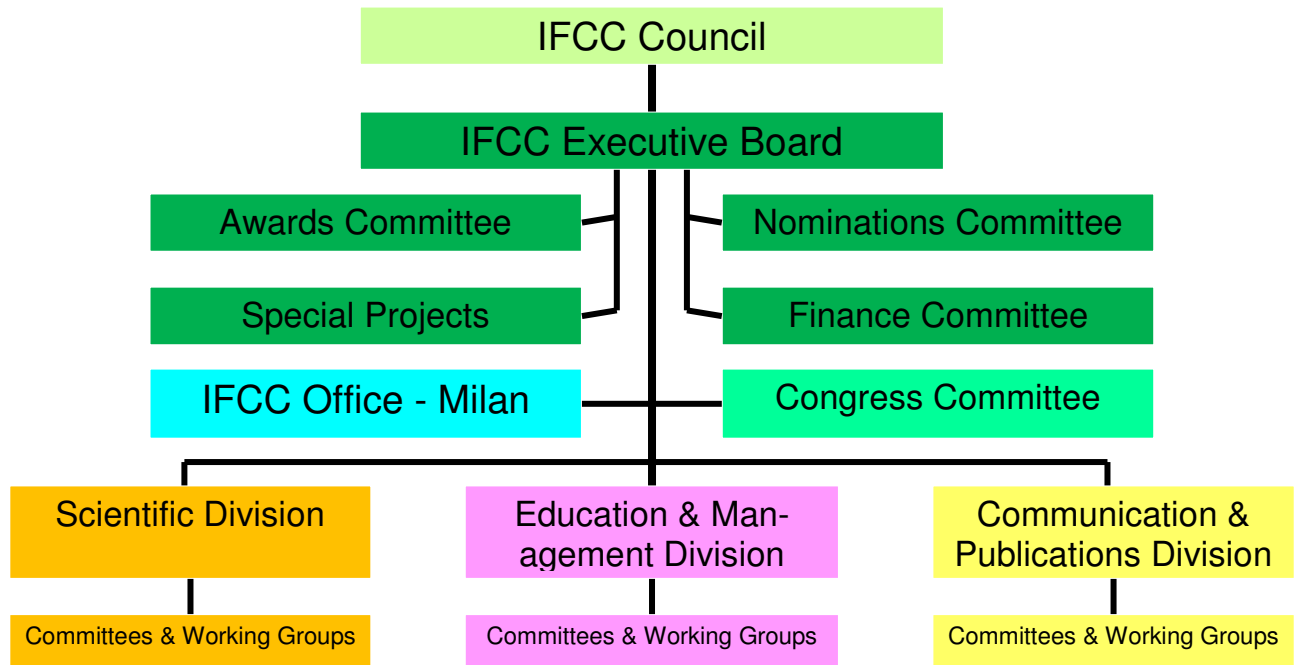
Dr Graham Beastall gave a President's report of the IFCC activities during the past three years. He highlighted some of the achievements of the present Executive Board (EB). During the term of this EB the number of Full Members has increased from 79 to 85. IFCC also has 5 Affiliate Members, and 44 Corporate Members. IFCC represents over 35000 senior professionals within its membership.

IFCC has 5 Regional Organizations which are in Europe, Asia-Pacific region, Latin America, Arab region and Africa. IFCC has negotiated with the European Federation an agreement which states that EFCC is a branch of IFCC in Europe.

The IFCC President emphasized that Full Members and Corporate Members are equal partners with the Federation.

The IFCC President explained the structure and organization of IFCC, as shown in the following figure:

IFCC Structure and Organisation



The IFCC President explained that the strength of the Federation lies on the activity of its members. IFCC has 3 Division, 15 Committees, 20 Working Groups, 9 Task Forces / Integrated projects. In total these functional units involve ~200 experts from around the world in advancing the contribution of clinical chemistry and laboratory medicine to healthcare.

The IFCC President explained that IFCC has the following Task Forces and Integrated Projects:

- Paediatric Laboratory Medicine *
 - Organising Pharmacogenetic Services *
 - Managing Chronic Kidney Disease *
 - Reporting Haemoglobin A1c *
 - Reporting Cardiac Markers *
 - International Clinical Liaison
 - Ethics
 - Young Scientists
 - Environmentally Friendly Laboratories
- * In association with relevant global clinical organisation

The IFCC President explained that the EB devised a three year action plan on March 2009. This action plan had 25 Action points across:

- Structure, internal organization and membership
- Education and management
- Broadening horizons
- Communication
- Public relations

Graham Beastall said that at 15 May 2011: 20 action points had been achieved and 5 were in progress. Details of the plan are available on www.ifcc.org, and in IFCC Handbook. Concerning the Members EB has been successful in the following issues:

- Increasing Full Members
- Consultation on structure and governance of IFCC
- Increasing nominations for Committees and WGs
- Large number of nominations for Awards
- Many national society reports in Annual Report
- Many applications for IFCC programme support
- Positive response to survey about IFCC communication
- Informal workshops – after Council
- IFCC General Conference in Corfu. This conference will be remembered as the volcanic ash conference!!

The EB has been successful on the following items concerning the Regions:

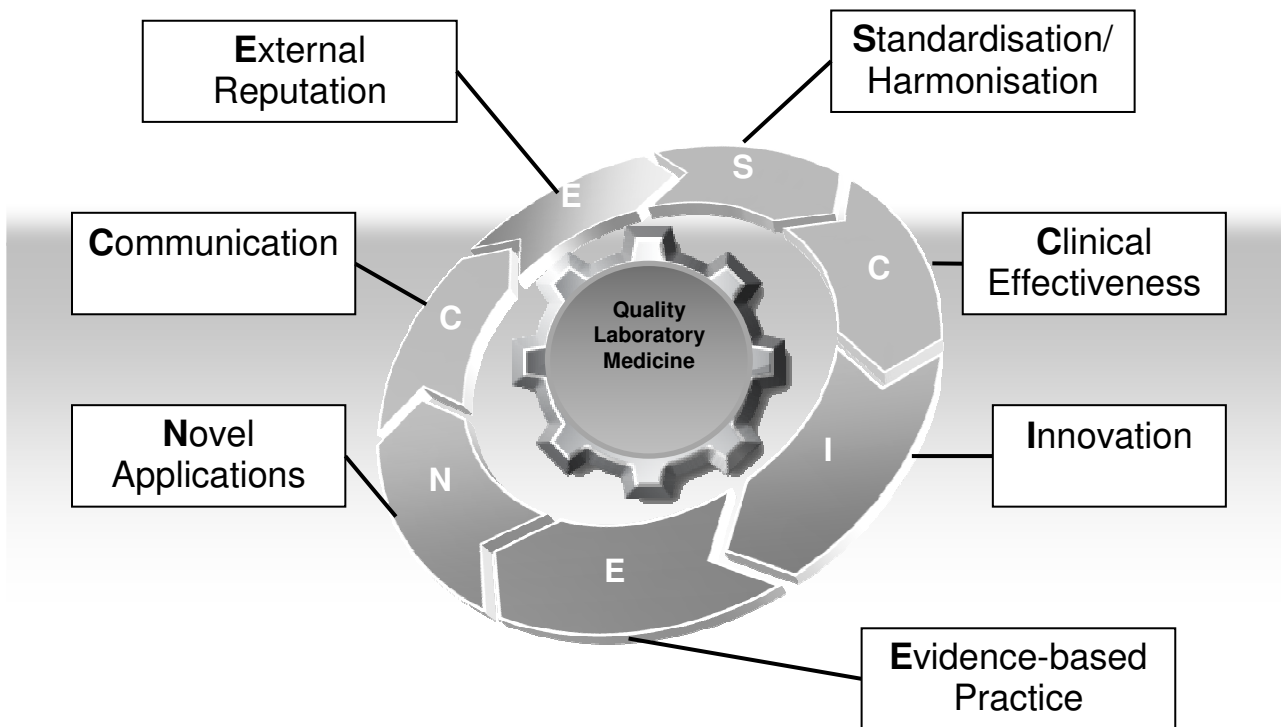
- Formation of an African Region AFCC
- Formal agreement with EFCC
 - Supporting increasing EFCC activity in Europe
- Formal agreement with APFCB
 - Supporting increasing APFCB activity
- Regional congresses:
 - EFCC in Innsbruck and Berlin
 - APFCB in Seoul
 - COLABIOCLI in Santiago
 - AFCC in Beirut
 - AFCC in Ibadan

The EB has also been active in forming relations with new liaisons.

- Agreement with WASPaLM
 - Joint symposium in Berlin
- Agreement with ILAC
 - Joint programme of activities
- Working links with clinical societies:
 - Diabetes, cardiovascular disease, renal disease, osteoporosis, paediatric laboratory medicine, pharmacogenomics, etc
- Young scientists
 - Growing international network

Graham Beastall also emphasized that EB has worked on adding value to Laboratory Medicine through SCIENCE (Standardization, Clinical effectiveness, Innovation, Evidence-based Practice, Novel applications, Communication and External reputation).

Adding Value Cycle to Quality Laboratory Medicine Services Through the Application of 'SCIENCE'



The IFCC President reported that there are still many opportunities and challenges:

- Many more countries as potential full members:
 - E.g. Africa, Middle East, Former Soviet Union
 - Few have viable national societies
 - Most will use more IFCC resources than they create
- Opening up full membership:
 - More than one national society per country
 - Broadening the scope of Laboratory Medicine
 - Neither option currently supported by Members
- Additional Corporate Members
 - Specialist and niche areas (e.g. POCT)
 - Emerging economies (e.g. China and India)

The IFCC President said that there are many opportunities concerning the emerging nations:

- IFCC working with other agencies to stimulate and support the development of quality laboratory medicine:
 - Internal quality control
 - External quality assessment
 - Quality management and laboratory accreditation
 - Adding value to quality laboratory medicine services
 - Establishing national societies
 - Education and training
 - Effective communication
 - Scientific and clinical research
- The opportunities are enormous. Current IFCC structure and finances are limiting

There are also opportunities in the scientific issues:

- IFCC working with other agencies to stimulate and support:
 - International assay standardisation
 - International assay harmonisation
 - Development of international standards
 - Development of reference measurement procedures
 - International agreement on units and reference intervals
 - Development of international practice guidelines
 - Valid and effective molecular diagnostics
 - The promotion of science underpinning progress in healthcare
- The opportunities are enormous. Current finances are limiting.

IFCC has many opportunities in collaboration with clinical liaisons:

- IFCC working with other international agencies to stimulate and support:
 - Understanding by laboratory medicine specialists and by users of our services of the clinical significance of results
 - Evidence based laboratory medicine practice
 - Clinical practice guidelines
 - Predictive, preventive and personalised medicine
 - Integrated diagnostics as part of patient pathways
- The opportunities are enormous. Current finances are limiting.

Graham Beastall concluded that IFCC has a huge agenda of opportunity. He is confident that the 'family of IFCC' has the talent to deliver. He continued that IFCC is constrained by an inflexible membership structure and inadequate finances which are already under pressure. These will be the two big challenges for the next Executive Board.

3. TREASURER'S REPORT

The IFCC Treasurer Dr. G. Shannan gave a report on the IFCC finances and the budget. Ghassan Shannan informed the meeting of the existing IFCC accounts and how they are used:

- ▣ LGT: IFCC Reserve: Euro Account
- ▣ Credit Suisse: IFCC Major Account
 - Swiss Francs, CHF
 - USD, \$
 - Euro, €

Dr. Shannan summarized the IFCC income and expenditure during the past three years. The development of the investments in LGT, the Investment account has been poor. The net assets have dropped from **1.781.433,09 €** on Aug. 31, 2008 to **1.504.128,39 €** on Dec. 31, 2010 due to the general drop in markets.

▣ Net Asset on 31st. August 2008:	1.781.433,09 €	
▣ 01. Liquidity:	286.754,95 €	16.10%
▣ 03. Bonds:	466.789,35 €	26.20%
▣ 04. Shares:	862.753,89 €	48.40%
▣ 12. Alternative Invest:	165.134,90 €	9.30%
▪ Net Asset on 31st. December 2010:	1.504.128,39 €	
▪ Liquidity:	001.257,91 €	00.08%
▪ Short-term:	042.230,29 €	02.81%
▪ Bonds:	655.182,63 €	44.56%
▪ Equities:	805.457,56 €	53.55%

The development of the income and expenditure has been the following:

Year	Income CHF	Expenses CHF
2008	1,131,118	2,442,641
2009	1,780,524	1,213,482
2010	912,508	1,657,399

The major sources of income are the Corporate Members and the WorldLab and the EuroMedLab congresses (Fortaleza 2008, Innsbruck 2009).

The major sources for expenses are the IFCC Office in Milan, Italy and the Divisions.

The Council meeting approved the financial report, audited reports of 2008, 2009, 2010, and the appointment of John Gates as the IFCC Auditor.

4. REMOVAL OF IFCC MEMBERS

The Treasurer Dr. G. Shannan informed the Council meeting that there are no IFCC members to be removed.

5. AWARDS COMMITTEE REPORT

Professor Chris Lam gave a report on the IFCC Awards. IFCC Awards Committee 2009-2011 consisted of the following persons:

Chairman : C W K Lam (HK)
Members : J-C Forest (CA), V Palicka (CZ)
R Sierra-Amor (MX), M Shaarawy (EG)
Consultant: Y M Dennis Lo (HK)

Chris Lam informed the Council of the awards to be presented during the 21st ICCCLM.

IFCC-Beckman Coulter Distinguished Clinical Chemist Award

Outstanding contributions to the science of Clinical Chemistry and Laboratory Medicine, or the application of Clinical Chemistry to the understanding or solution of medical problems

Prof Emeritus Ulf-Håkan Stenman, Finland

IFCC-Siemens Henry Wishinsky Award for Distinguished International Services

Unique contributions to the promotion and understanding of Clinical Chemistry and Laboratory Medicine throughout the world

Dr Carl A Burtis, USA

IFCC-Abbott Award for Distinguished Contributions in Education

Extraordinary contributions in establishing and developing educational materials for our discipline to improve training and educational programs worldwide or in a region

Professor Mary F Burritt, USA

IFCC-Abbott Award for Significant Contributions in Molecular Diagnostics

Unique contributions to the promotion and understanding of molecular biology and its application In Clinical Chemistry and Laboratory Medicine worldwide

Professor Michael Neumaier, Germany

IFCC Distinguished Award for Laboratory Medicine and Patient Care

Unique contributions in Laboratory Medicine, its application in improving patient care and having a worldwide impact in clinical medicine

Professor Ronald J A Wanders, The Netherlands

IFCC-Robert Shaffer Award for Outstanding Achievements in the Development of Standards for Use in Laboratory Medicine Co-sponsored by NIST and CLSI

Outstanding and unique contributions to the advancement of reference methods and/or reference materials for Laboratory Medicine to facilitate improved quality of clinical diagnostics and therapies, which would in turn lead to reduced costs and improved patient care

Professor Linda Thienpont, Belgium

IFCC-ROCHE Young Investigator Award (from 2011)

Recognizes and encourages the academic and professional development of a young investigator who has demonstrated exceptional scientific achievements in Clinical Chemistry and Laboratory Medicine early in his/ her career

Professor Rossa W K Chiu, Hong Kong

6. CORPORATE MEMBERS' REPORT

The Corporate Representative at the IFCC Executive Board is Dr. Thomas Brinkmann. The Corporate report for the Council was prepared by Thomas Brinkmann and Joseph Passarelli and presented by Passarelli. The report highlighted the role of Corporate Members within the IFCC. At the moment there are 44 Corporate Members. There are also several industry-sponsored IFCC awards and specific sponsorship of IFCC initiatives.

Corporate Representatives in EB and the 3 Divisions are:

- **Thomas BRINKMANN (Unilabs)** Executive Board
- **Joseph PASSARELLI (Roche)** Scientific Division
- **Rolf HINZMANN (Roche)** Education & Management Division
- **Bruce JORDAN (Roche)** Communication & Publications Division

Corporate Representatives are also active participants in most Working Groups and Committees.

Corporate Members had several meetings during the term 2009-2011:

- June 2009 EuroMedLab 2009, Innsbruck, Austria
- April 2010 General Conference, Corfu, Greece
- July 2010 AACC 2010, Anaheim, CA, USA
- December 2010 (C-RIDL Meeting of CM) Munich, Germany
- May 2011 WorldLab / EuroMedLab 2011, Berlin, Germany

Corporate Members have focused on “Adding Value to Clinical Chemistry and Laboratory Medicine”. There have been several meetings as joint activities between IFCC /and IVD Industry. The Kick-off Meeting was held at EuroMedLab 2009 in Innsbruck and the next meeting was held in Corfu during the IFCC General Conference. Representatives of National Societies and Corporate Members participated these meetings. The Organisers / Speakers for these meetings were Graham Beastall and Thomas Brinkmann. The next meeting will be held on July 2011 during AACC in Atlanta, US.

The Corporate Members’ meeting in Corfu focused on “Future of Laboratory Medicine; Challenges for Lab Professionals and IVD Companies”. A joint activity with Dr. Michael Mayer, Hadassah Medical Center, Hebrew University - Hadassah Medical School, Jerusalem, Israel was organized during the General Conference. A joint publication is in preparation.

IFCC has gained the following new Corporate Members:

New Corporate Members 2009

Agappe	(India)
Gentian	(Norway)
AbD Serotec Morphosys	(UK)
Sentinel CH -	(Italy)
Sichuan Maker Biotechnology.	(China)

New Corporate Members 2010

Scipac	(UK)
Philips Healthcare	(Netherlands)
Biocrates	(Austria)

New Corporate Members 2011

Unilabs	(Switzerland)
Labquality	(Finland)

IFCC has also lost some Corporate Members:

2009

Olympus	(Japan) (acquisition by Beckman Coulter)
----------------	--

2010

Hitachi	(Japan)
Control Lab	(Brazil)

IFCC / Beckman Coulter Flow cytometry Course

Beckman Coulter will continue to support the Flow cytometry course.

The new chairman is Prof. Dr. med. Ulrich SACK, Max-Bürger-Forschungszentrum (MBFZ), Leipzig, Germany. The next course is scheduled for March 2012. The course will run as a joint activity between IFCC and ESCCA (European Society for Clinical Cell Analysis).

IFCC / Roche Bergmeyer Conference

Roche Diagnostics will continue to support and organise the conference . In **2010** the topic was **Novel Biomarkers – From Discovery to Clinical Application**. Proceedings from the meeting have been published and are available online or as a hardcopy from the IFCC office. In **2012** the dates have been fixed (March 5–7). The venue will be in the same location (Grainau, Germany). The Conference topic is **Vitamin D in Health and Disease**. The programme is in development and speakers being identified by the SD. Long-standing tradition of the conference will be maintained.

An Overview of Corporate Members' Annual Dues 2011

Corp. Member's Revenue (Million US\$)	<3.0	<20.0	<100	<400	<600	>600
Annual dues (CHF)	2,250	5,600	8,950	10,100	11,200	13,500
No. of companies in 2011	13	8	5	6	3	5
Sum 2011 (CHF)	29,250	44,800	44,750	60,600	33,600	67,500
Percentage	10.4	16.0	16.0	21.6	12.0	24.1

Total Income: 280,500 CHF

Disclosure of Methods

A Clinical Chemistry editorial published in 01/2011 written by Rifai et al. ? include the title This paper was later published in many other scientific journals. A written response has been developed by IFCC Corporate Members and AdvaMed and EDMA were contacted to provide a statement on behalf of CM's. Both organizations agreed to use the CM's manuscript as template.

C-RIDL - Global Reference Values Study chaired by Prof. Ichihara, Japan

Most of CM with Clinical Chemistry business support Prof. Ichihara's initiative to determine worldwide reference values. Follow-up meeting will be held on May 16, 2011 during ICCCLM.

7. DIVISIONAL REPORTS

SCIENTIFIC DIVISION

Professor Ian Young gave a report. He reported that the Chair of Scientific Division has changed. Professor Mauro Panteghini served as Chair in 2006-2010 and Professor's Young term started in January 2011.

The Members of the Executive Committee of Scientific Division are:

Name	Position	Country	Term	Time in Office
I. Young	Chair	UK	1st	2011 01 - 2013 12
P. Gillery	Vice-Chair	FR	1st	2011 01 - 2013 12
G. Myers	Secretary	US	1st	2009 01 - 2011 12
N. Hamasaki	Member	JP	1st	2009 01 - 2011 12
G. Merlini	Member	IT	1st	2011 01 - 2013 12
L. Siekmann	Member	DE	2nd	2009 01 - 2011 12
J. Passarelli	Corporate Rep	US	1st	2010 01 - 2012 12
H. Schimmel	IRMM Consultant	BE		
D. Bunk	NIST Consultant	US		
M. Muller	Chair JCTLM	AT		

Professor Young reported that the SD Committees and Working Groups are the following:

8.2.6.	Nomenclature, Properties and Units (C-NPU) in collaboration with International Union of Pure and Applied Chemistry (IUPAC)	F. Pontet (FR)
8.2.11.	Molecular Diagnostics (C-MD)	M. Pazzagli (IT)
8.2.13.	Plasma Proteins (C-PP)	G. Merlini (IT)
8.2.21.	Reference Systems of Enzymes (C-RSE)	F. Ceriotti (IT)
8.2.23.	Traceability in Laboratory Medicine (C-TLM)	A. Kessler (DE)
8.2.24.	Reference Intervals and Decision Limits (C-RIDL)	K. Ichihara (JP)

8.3.33.	Standardisation of Thyroid Function Tests (WG-STFT)	L. Thienpont (BE)
8.3.35.	Standardisation of Hemoglobin A2 (WG-HbA2)	R. Paleari (IT)
8.3.36.	Standardisation of Carbohydrate-Deficient Transferrin (WG-CDT)	F. Schellenberg (FR)

8.3.37.	Standardisation of Cystatin C (WG-A. Grubb (SE) SCC)	
8.3.38.	Standardisation of Glomerular Filtration Rate Assessment (WG-GFRA)	N. Greenberg (US)
8.3.39.	Standardisation of Albumin Assay in Urine (WG-SAU)	G. Miller (US)
8.3.40.	Standardisation of Pregnancy-Associated Plasma Protein A (WG-PAPP A)	K. Pettersson (FI)
8.3.41	Growth Hormone (WG-GH)	M. Bidlingmaier (DE)
8.3.42	Standardisation of Insulin Assays (WG-SIA)	M. Steffes (US)
8.3.43	Standardisation of Troponin I (WG-TNI)	J. Tate (AU)
8.3.44	Allowable Errors for Traceable Results (WG-AETR)	R. Bais (AU)
8.3.45	Harmonisation of Autoantibody Tests (WG-HAT)	J. Sheldon (UK)
8.3.46	Quality Specifications for Glucose POCT (WG-GPOCT)	R. Tirimacco (AU)
8.3.47	Clinical Quantitative Mass Spectrometry Proteomics (WG-cMSP)	S. Lehmann (FR)

Ian Young reported that SD is working in partnership with several organizations:

- ▣ IFCC Divisions
- ▣ Corporate members
- ▣ Metrology institutions
- ▣ Governmental bodies and non-Governmental organisations
- ▣ Other professional bodies
- ▣ Clinicians and clinical organisations

Ian Young reported of some of the achievements in 2008-2010

- ▣ 61 scientific publications 2008-2010
- ▣ More than 150 scientists and clinicians from all IFCC regions involved as members of Cs / WGs
- ▣ SD sessions at most major international congresses
- ▣ Bergmeyer conferences on Markers of Kidney Disease and Novel Biomarkers
- ▣ OCD conferences on Biochemical Markers in Clinical Cardiology and Pregnancy-related Disorders

Ian Young reported of the major achievements of some of the Committees and Working Groups:

Committee on Reference Systems of Enzymes Ferruccio Ceriotti (IT) / Gerhard Schumann (DE)

IFCC Primary Reference Procedures for the Measurement of Catalytic Activity Concentrations of Enzymes at 37 °C

Part 9. Reference Procedure for the Measurement of Catalytic Concentration of Alkaline Phosphatase. In press. CCLM.

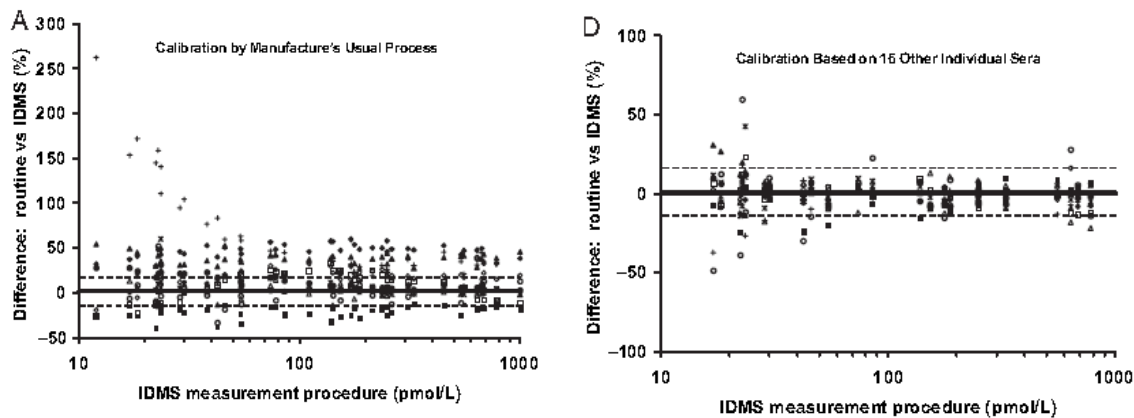
WG Standardisation of Thyroid Function Tests Linda Thienpont (BE)

Objective. Development of reference measurement systems for thyroid hormones (total T4 and T3, free T4 & T3) and TSH

1. Thienpont LM et al. for the IFCC Working Group on Standardization of Thyroid Function Tests. **“Report of the IFCC Working Group for Standardization of Thyroid Function Tests, Part 1: Thyroid-Stimulating Hormone”**. Clin Chem 2010; 56:902-11.
2. Thienpont LM et al. for the IFCC Working Group on Standardization of Thyroid Function Tests. **“Report of the IFCC Working Group for Standardization of Thyroid Function Tests, Part 2: Free Thyroxine and Free Triiodothyronine.”** Clin Chem 2010;56:912-20.
3. Thienpont LM et al. for the IFCC Working Group on Standardization of Thyroid Function Tests. **“Report of the IFCC Working Group for Standardization of Thyroid Function Tests--Part 3: Total Thyroxine and Total Triiodothyronine”**. Clin Chem 2010;56:921-9.

WG Standardisation of Insulin Assays M. Steffes (US)

Objective: To Improve the standardization of assays for insulin by the development of a candidate reference method and materials



WG Standardisation of Troponin I Jill Tate (AU)

- Develop a candidate secondary reference measurement procedure and candidate secondary reference material for cardiac troponin I (cTnI)

- Maintain a database of analytical characteristics of commercial and research high sensitivity cardiac Troponin I & T assays per manufacturer

Professor Young concluded his report by stating that if anybody is considering becoming involved in the work of SD he/she has several options:

- Apply for positions on SD or C's
- Become a corresponding member of a C
- Become a member of a WG
- Propose a new WG or C

EDUCATION AND MANAGEMENT DIVISION

Ms. Janet Smith reported on the Education and Management Division's mission statement:

EMD will provide IFCC members and the healthcare community with the best education relevant to Clinical Chemistry and Laboratory Medicine, directed at scientific, management and clinical issues. Mechanisms to achieve this are courses, lectures and lecture programmes, workshops, provision of information on available training and education material, and visits by experts. The Education and Management Division works through its Committees, Subcommittees, Working Groups and Special Projects.

Janet Smith reported that the remit of the EMD Executive Committee is planning, coordination, follow-up, budget, communication with IFCC Executive. EMD has the following committees:

9.02.04 COMMITTEE ON CLINICAL MOLECULAR BIOLOGY CURRICULUM: Mol. Biol. Teaching and Training of Trainers

9.02.05 COMMITTEE ON ANALYTICAL QUALITY: IQC, EQAS management and implementation

9.02.07 COMMITTEE ON EVIDENCE BASED LABORATORY MEDICINE: Clinical Decision Making, Liaison and collaboration with bodies producing guidelines, Courses, Web-site .

9.02.09 COMMITTEE ON CLINICAL LABORATORY MANAGEMENT: Management issues

The Committee on Clinical Molecular Biology Curriculum organizes training Courses in basic laboratory methods in molecular diagnostics (basic molecular laboratory techniques, data interpretation). The lectures are on different topics

- Human and molecular genetics
- Infectious diseases
- Predisposition and diagnostics of malignant diseases
- Development and limits of diagnostic strategies
- New technological developments

This committee's key activities for 2009-2011 were

- Development of the 'Laboratory in a box' concept: Allows courses to be transferred to areas where they are needed
- Pilot course held in Syria, December 2009
- 2010 course held in Uruguay
- ICC Worldlab Symposium: Biobanking and laboratory medicine: two resources for modern healthcare

The remit of Committee on Analytical Quality is internal quality control (IQC), EQAS management, education in establishment of IQC and EQA programmes in medical laboratories.

As future activities of the Committee are the C-AQ members are closely involved in the project to raise awareness of quality competence in clinical laboratories and C-QA will collaborate with C-CLM in producing a second volume of the handbook of laboratory management.

Janet Smith reported that the remit of the Committee on Evidence-Based Laboratory medicine is Clinical Decision Making, Liaison and collaboration with bodies producing guidelines, Courses, Web-site. The future activities of the Committee are close involvement in the project to raise awareness of quality competence in clinical laboratories and collaboration with C-AQ in producing a second volume of the handbook of laboratory management, currently being reviewed, prior to publication.

Janet Smith reported that WG Laboratory Errors and Patient Safety had developed a Web-site, which will be accessible from the IFCC website. Patient Safety is a priority area for IFCC. The WG Chair Professor Plebani is anxious to have more input from national societies in his project on quality indicators.

Janet Smith reported on the WG-New Bone Marker Standards in Osteoporosis. In collaboration with the International Osteoporosis Federation, the WG has defined a single marker for the diagnosis of osteoporosis and another for monitoring treatment. A Position paper has been published in Osteoporosis International. This highlights the need for international reference standards. The next phase of the project will address this issue.

Janet Smith reported on the Visiting Lecturer Program. She reminded that the applications should be submitted to the VLP Chair. She also said that collaboration within and between countries is welcomed to increase effectiveness. The application form can be downloaded from IFCC website. The host countries in 2009-2011 have been Argentina, China, Ecuador, India, Indonesia, Lebanon, Mexico, Nigeria, Paraguay, Peru, Philippines, Romania, Sri Lanka, Syria, Tunisia, Turkey, Uruguay, Vietnam. In 2011 VLP has been projected to Asian Pacific Region (APFCB), Kenya, Romania and Uruguay.

The WG-Flow Cytometry is planning to organize the IFCC-Beckman Course for spring 2012 in Leipzig, Germany.

Janet Smith reported on the project for developing quality competence in medical laboratories. The objective of the project is to develop transferable education templates. Two components were originally defined: analytical quality and quality systems and accreditation. Pilots are planned for Vietnam and Sri Lanka. A third component, clinical interpretation, has been added. Workshops have been organized in 2010 in Indonesia and Tunisia, and in 2011 in Philippines and Kenya.

Janet Smith concluded her presentation by saying that the future EMD initiatives are to form a Committee on Distance Learning and a WG on the use of tumour markers.

COMMUNICATION AND PUBLICATIONS DIVISION

Dr. Ellis Jacobs gave a report. The Communication and Publications Division (CPD) has a Mission Statement, which is: **To provide worldwide communications** on the role of the IFCC to clinical scientists, physicians and health policy makers, **To provide continuing education materials** and services in printed and electronic format, **To maintain the integrity and image of IFCC** as a scientific organization. The Strategic Plan for 2009-2011 was to improve Internal Communications Within IFCC, Website Improvements, to enhance Distance Learning Opportunities for Member Societies and Their Membership and to enhance Public Relations/Visibility.

Ellis Jacobs reported that the IFCC documents are the following:

- ▣ **Recommendations** - formally approved documents aimed at harmonization of a scientific or educational aspect of clinical chemistry-laboratory medicine (CC-LM)
- ▣ **Guidelines** - suggestions for harmonization of a scientific or educational aspect of CC-LM (without formal approval)
- ▣ **Technical Reports** - reports on the outcome of studies by IFCC units
- ▣ **Position Papers/Reviews** - documents produced to highlight developments in a specific area of CC-LM
- ▣ **Editorials** - points of view on specific topics/issues of relevance to CC-LM
- ▣ **Other** - occasional publications not fitting other categories

IFCC's publication policy is the following:

- ▣ CCLM is the primary vehicle for IFCC scientific publications
- ▣ Other journals may also publish IFCC recommendations and other IFCC documents
- ▣ CPD-Publications/Distance Learning Coordinator has liaison role for editing, listing and archiving
- ▣ The copyright is held by IFCC

Ellis Jacobs reported that CCLM is the current official journal for the IFCC. IFCC documents will be in a special IFCC section in CCLM. All IFCC documents are available free on the CCLM Web Site. CCLM offers free access to full on-line version available NR & PR of members societies, CR, EB, DC, and IFCC Regional presidents. There are also reduced-rate subscriptions available for the paper CCLM through National Societies.

IFCC has published two monographs :

- 🌐 Handbook on Flow Cytometry
- 🌐 Monograph - Basic Guidelines in Clinical Lab Management

Ellis Jacobs reported of activities of CPD Committees and Working Groups:

Committee on Public Relations **Chair Khosrow Adeli (CA)**

- 🌐 Terms of Reference
 - 🌐 Acting as IFCC ambassadors promoting IFCC and the field of clinical chemistry in their country of residence, national society and region
 - 🌐 Identifying key PR tools and make recommendations to the CPD, other divisions and/or EB
 - 🌐 Developing and updating promotional materials, through the CPD, on the IFCC organization and activities, as well as the discipline of clinical chemistry for distribution worldwide
 - 🌐 Acting as a link for distribution of IFCC brochures and other promotion materials to other laboratory professionals in their country of residence, national society, and region
 - 🌐 Assisting IFCC in improving its visibility in their country of residence, national society, region, as well as internationally
 - 🌐 Participating as IFCC ambassadors while attending regional, national, and international conferences
 - 🌐 Attending occasional conference calls or face-to-face meetings to discuss the activities of the Working Group
- 🌐 Activities
 - 🌐 Updated PR brochure (2009-11)
 - 🌐 Produced in Arabic, Chinese, English, French, German, Italian, Japanese, Portuguese and Russian
 - 🌐 Translated into Farsi, Turkish and Polish
 - 🌐 Created PR Slide Presentation

- 🌐 Labs are Vital Program
 - 🌐 Developing a PR brochure for general public, governments and industry
 - 🌐 Creating Slide Presentation on Role of Lab Medicine and Its Role in Healthcare Delivery
 - 🌐 Had joint meeting with LabsAreVital (LAV) to discuss/pIN program
 - 🌐 Two members on LAV board
 - 🌐 Helped in local & regional activities in Australia and Asian-Pacific region
- 🌐 C-PR plans to-
- 🌐 Work more closely with the LAV in preparing PR tools such as slide kits; webcasts; news releases
 - 🌐 Identify PR-LAV ambassadors in each region to help sustain the program
 - 🌐 Initiate studies to provide factual data to support the role of the lab in saving healthcare dollars and reducing costs

CPD Working Groups are:

WG – IDL (Internet & Distance Learning)	Chair Peter Veervart (AU)
WG - IFCC news	Chair Edgard Delvin (CA)
WG – eJIFCC	Chair Grazyna Sypniewska (PL)
WG – IANT(Ibero-American Nomenclature & Translations)	Chair Montserrat Blanes-Gonzales (PY)

Ellis Jacobs reported on the eJIFCC. He said that in 2010, Vol 21 had the following issues.

- 🌐 1st – Contributed articles
- 🌐 2nd – Proceedings of the International Conference organized in Warsaw by Polish Ministry of Health and National Chamber of Diagnosticians, “Pre- and Postgraduate Education in Laboratory Medicine in Europe”
- 🌐 3rd – Contributed articles
- 🌐 4th – Contributed articles, PSEP reports

Each issue has 4 articles minimum. Changes will be made in website to support application for Indexing in PubMed.

Ellis Jacobs reported on eNews :

WG members are from Brazil, Canada, Cyprus, France, Malaysia, Mexico, Nigeria, Paraguay, Poland, Slovenia, South Africa, Spain, Tunisia, Uruguay. eNews is published bi-monthly electronically and in LabMedica International (LMI) WG needs assistance for NRs and Regional Federations in obtaining articles.

Ellis Jacobs reported on Internet & Distance Learning. The Website strategy is

- 🌐 To communicate with IFCC members by providing a facility to disseminate and exchange ideas and information
- 🌐 To provide a platform for e-teaching and e-learning by stressing IT literacy for all
- 🌐 To disseminate useful and accurate knowledge and information

General actions are to improve usability of website, to diversify content of website, informing lab personnel IT knowledge and internet skills and to introduce IFCC members to variety of learning technologies.

Ellis Jacobs reported that there are 4000-8000 visitors to the IFCC website per month.

TOP WEBPAGES (PART OF TOP 50): JUNE 2010–APRIL 2011

Publications Div
page

13329

Organization page	11329
Congresses & Conferences	10343
Scientific Division	9740
Congress Calendar	8239
Education Division	7574
eJIFCC	5882
Full Members	5176
Services & Bookstore	4891
WorldLab 2011	3484
IFCC Auspices	3425

Ellis Jacobs reported that the future website activities are C-EBM Database, C-NPU Database, C-ECD Database, C-MD CLGGS (Clinical Laboratory Genomics & Genetics Standards), ESAB (European Scientific Advisory Board) Linkage, RIA (Rincon Iberoamericano) Web pages. The activities concerning the website are to develop policy for dealing with various requests for “hosting” websites, and importing and maintaining databases. Enhancement of the website’s attractiveness, effectiveness and popularity is on-going.

Ellis Jacobs reported on the **Siemens/IFCC Distance Learning Program**. A wide range of formats are possible: simple lecture with/without powerpoint and full on-line course with examination. The languages used will be English, Spanish & French. Accreditation and Certification of Course Completion will be possible. The first two products are BNP and Developing a Quality System in Line with ISO 15189.

Ellis Jacobs reported that CPD has the following other activities. CPD organizes National Societies Journal Editors & Publishers Meeting and symposia in congresses and conferences. It grants translation & reprinting approvals for Acta Bioquimica Clinica Latinoamericana. CPD symposia in 2011 are:

- 🌐 eLearning and Distance Education in Clinical Chemistry and Laboratory Medicine – ICCG, Berlin, Germany (joint with EMD)
- 🌐 Peer Review and Ethics in Publications – COLABIOCLI, Punta Cana, Dominican Republic

Ellis Jacobs informed that IFCC is now on Facebook and LinkedIn.

All reports were approved by the Council.

8. ELECTION OF OFFICERS AND MEMBERS OF THE EXECUTIVE BOARD, 2012-2014

Jocelyn Hicks, Past-President and Päivi Laitinen, Secretary chaired the election of the members of the Executive Board.

Election of Tellers

Joseph Passarelli (US) and Hans Jansen (NL) were elected Tellers.

Summary of Procedures and Nominations

Jocelyn Hicks explained the Procedures of the voting. Every Full Member National Society has one vote. The voting right of National Representative or an authorized person (proxy)

has been checked before Council Meeting. National Representative or an authorized person has received an envelope with the ballots for voting. Ballots are colour-coded. Ballots are given personally country by country.

The attendants of the Council meeting who are allowed to vote are in the list below highlighted in light blue:

IFCC COUNCIL - Berlin, May 15th, 2011	
COUNTRIES	NATIONAL REPRESENTATIVE or DELEGATE
ALBANIA	Prof. Asc. Anyla Bulo (Kasneçi) - National Representative
ALGERIA	Mr. Touimi Benjelloun - Delegate
ARGENTINA	Dr. Carlos Daniel Navarro - National Representative
AUSTRALASIA	Ms. Jill Tate - National Representative
AUSTRIA	Prof. Dr. Andrea Griesmacher - National Representative
BELGIUM	Prof. Jean-Paul Chapelle - National Representative
BOSNIA HERZEGOVINA	(Dr. Jozo Coric - Nat. Rep.) Dr. Nafija Serdarevic - Delegate
BRAZIL	Dr. Irineu Keiserman Grinberg - Delegate
BULGARIA	Prof. Kamen Tzatchev - National Representative
CANADA	Dr. James Wesenberg - Delegate
CHILE	Dr. Eduardo Aranda - National Representative
CHINA P.R.	Dr. Sun Fei - Delegate
CHINA TAIPEI	Prof. Shu-Chu Shiesh - Delegate
COLOMBIA	Dr. Sonia Jater Zabaleta
COSTA RICA	Dr. Oswaldo J. Ruiz Narvaez
CROATIA	(Dr. Dunja Rogic- Nat.Rep.) Dr. Ana Maria Simundic - Delegate
CUBA	Dr. Manuel Morejon Campa
CYPRUS	Dr. Charis Ch. Charilaou - Delegate
CZECH REPUBLIC	Prof. Dr. Jaroslav Racek - National Representative
DENMARK	(Dr. Stig E. Bojesen - Nat.Rep.) Dr. Nete Hornung - Delegate
DOMINICAN REP	Lic. Loida Mercedes Gonzalez Lopez
ECUADOR	Dr. Juana Ortellado de Canese - Delegate

EGYPT	Prof. Mohamed Shaarawy
ESTONIA	Dr. Kaido Beljaev - Delegate
ETHIOPIA	Dr. Zelalem Messele Abate
FINLAND	Prof. Kari Pulkki
FRANCE	Prof. Philippe Gillery - National Representative
GERMANY	Prof. Karl Lachner - Delegate
GREECE	Dr. Alexander Haliassos - National Representative
GUATEMALA	Dr. Ana Leticia Maselli - National Representative
HONDURAS	Dr. Miriam Aguilera
HONG KONG	Prof. Christopher W K Lam - National Representative
HUNGARY	Dr. Erika Seres
ICELAND	Dr. Jon Jóhannes Jónsson - National Representative
INDIA	Dr. Arun Raizada - Delegate
INDONESIA	Prof. Endang Wahjuningtyas Hoyaranda - National Representative
IRAN	Prof. MJ Rasaei
IRELAND	Ms Ruth O'Kelly - National Representative
ISRAEL	Dr. Nurit Algur - Delegate
ITALY	Dr. Ferruccio Ceriotti - National Representative
JAPAN	Dr. Naotaka Hamasaki - Delegate
JORDAN	(Dr. Yousif Y. Bilito - Nat.Rep.) Dr.Bo Amarin - Delegate
KENYA	Prof. Donald Orinda
KOREA	Prof. Sail Chun
KUWAIT	Prof. Salin Itani
LATVIA	Dr. Dzintars Ozolins - National Representative
LEBANON	Dr. Marc Antoine Zablith
LITHUANIA	Dr. Dalius Vitkus - Delegate
LUXEMBOURG	Dr. Opp Matthias
MACEDONIA	Prof. Sloboda Dzhekova-Stojkova - National Representative

MALAYSIA	Dr. Raja Elina Raja Ezaddin - Delegate
MEXICO	Dr. Rosa I Sierra Amor - National Representative
MONTENEGRO	Mrs Najdana Gligorovic-Barhanovic
MOROCCO	Prof. Abdelrhafour Guedira - National Representative
NEPAL	Dr. Binod Kumar Yadav - National Representative
NETHERLANDS	Dr. Huib Storm - National Representative
NIGERIA	Dr.Mabel Charles Davies - Delegate
NORWAY	Dr. Kristin Moberg Aakre - Delegate
PAKISTAN	Dr. Elisazbeth Frank - Delegate
PARAGUAY	Dr. Montserrat Blanes - Delegate
PERU	Prof. Eleazar Antonio Antunez de Mayolo - National Representative
PHILIPPINES	Dr. Leila Florento - National Representative
POLAND	Prof. Grazyna Sypniewska - National Representative
PORTUGAL	(Dr. Henrique Reguengo - Nat.Rep.) Prof. Germano da Sousa - Delegation
ROMANIA	Dr. Camelia Grigore
RUSSIA	Prof. Lina Khorovskaya - National Representative
SERBIA	Prof. Nada Majkic-Singh - National Representative
SINGAPORE	Dr. Hera Yuliana Intantri - Delegate
SLOVAK REPUBLIC	Doc. Ing. Pavol Blažíček,
SLOVENIA	Dr. Barbara Možina - National Representative
SOUTH AFRICA	Prof. Rajiv Erasmus - National Representative
SPAIN	Dr. Francisco Álvarez Menéndez - National Representative
SRI LANKA	Dr. Peter Vervaart - Delegate
SUDAN	Prof. Eltahir Awad Gasim Khalil
SWEDEN	Dr. Per Bjellerup - Delegate
SWITZERLAND	PD. Dr. med. Lorenz Risch
SYRIAN ARAB REPUBLIC	Dr. Fouad Harb - National Representative
THAILAND	Prof. Phannee Pidetcha

TUNISIA	Dr. Hedhili Abderrazek - National Representative
TURKEY	Prof. Diler Aslan - National Representative
UK	Dr. Mike Thomas - National Representative
UKRAINE	Dr. Igor Mishunin
UNITED STATES OF AMERICA	Dr. Ann M. Gronowski - National Representative
URUGUAY	Prof. Stella Raymondo - National Representative
VIETNAM	(Dr. Vu Quang Huy - Nat.Rep) Dr.Bao Toan Nguyen - Delegate

57 National Representatives and delegates were present in the Council meeting and are registered to vote.

Election of Officers and Members of EB

President

There is only one candidate for the position of President, Graham Beastall (UK). Council Meeting is asked to **confirm** the election of Graham Beastall as **unopposed candidate** for the position of President. The Council approved the election of **Graham Beastall** as the President by acclamation.

Vice-President

There is only one candidate for the position of Vice-President, Howard Morris (AU). Council Meeting is asked to **confirm** the election of Howard Morris as **unopposed candidate** for the position of Vice-President. The Council approved the election of **Howard Morris** as the Vice-President by acclamation.

Treasurer

There is only one candidate for the position of Treasurer, Bernard Gouget (France). Council Meeting is asked to **confirm** the election of Bernard Gouget as **unopposed candidate** for the position of Treasurer. The Council approved the election of **Bernard Gouget** as the Treasurer by acclamation.

Secretary

There were two candidates for the position of the Secretary:

- Renze Bais (Australia)
- Sergio Bernardini (IT)

In the first round the following votes were given:

- Renze Bais (Australia) 25
- Sergio Bernardini (IT) 32

Thus, **Sergio Bernardini** was elected by a majority of votes.

Members of the Executive Board

There are seven candidates for the three positions of Member:

- Emmanuel O. Agbedana Nigeria
- Layachi Chabraoui Morocco
- Larry Kricka US
- Leslie Lai Malaysia
- Michael Mayer Israel
- Vanessa Steenkamp South Africa
- Ulisses Tuma Brazil

In the first round the following votes were given:

- Emmanuel O. Agbedana Nigeria 4
- Layachi Chabraoui Morocco 11
- Larry Kricka US 32
- Leslie Lai Malaysia 31
- Michael Mayer Israel 14
- Vanessa Steenkamp South Africa 35
- Ulisses Tuma Brazil 37

Thus Larry Kricka, Vanessa Steenkamp and Ulisses Tuma were elected.

Results of Corporate Members' Election of Corporate Member of EB

Jocelyn Hicks announced that the Corporate Members had elected a new Corporate Representative for Executive Board via mail ballot. The only one candidate was Thomas Brinkmann (Unilabs, Switzerland). The new Corporate Representative is Thomas Brinkmann.

Jocelyn Hicks congratulated the newly elected Executive Board and wished them success.

9. PRESIDENT ELECT

Proposal to introduce a President Elect to replace the Vice President in the Executive Board elected to hold Office from January 2015 until December 2017.

Graham Beastall explained the present election system:

Current Composition of IFCC Executive Board

Past President appointed after completion of President Role

President	}	
Vice President	}	
Secretary	}	elected by vote at Council Meeting
Treasurer	}	
Members x 3	}	

Corporate Member Representative elected by postal ballot of Corporate Members

Composition of IFCC Executive Board if Agenda Item 9 is Approved

Past President appointed after completion of President Role

President	}	
President Elect	}	
Secretary	}	elected by vote at Council Meeting
Treasurer	}	
Members x 3	}	

Corporate Member Representative elected by postal ballot of Corporate Members

Terms of Office

With the exception of the Past President, who is appointed, all members of the Executive Board are elected for a three year term of Office commencing on 1 January of Year 1 and finishing on 31 December of Year 3. Members of the Executive Board are eligible to seek re-election for a second three year term of Office but no individual may serve in any elected capacity for a total of more than six years.

- 9a. Supplementary proposal if the proposal in Agenda item 9 is approved. Council will be asked to vote on the term of Office for the President Elect. There will be two options:
- Option 1: A three year term of Office. (The first President Elect would select-ed to hold Office from January 2015 for three years)
 - Option 2: A one year term of Office. This year would be served in the third year of an Executive Board. This option would be linked with reduction to a two year term of Office for the Past President, who would serve for the first two years of an Executive Board. (The first President Elect would hold Office from January 2017 and replace the Past President who would hold Office from January 2015 until December 2016) (See Appendix 1)

Note: Approval of the proposals in Agenda item 9 and 9a will require changes in the IFCC Statutes. Full Members will be invited to approve a change in Statutes before the election of the Executive Board that will hold Office from January 2015.

The Council first voted on the proposal "A President Elect should replace the Vice President on the IFCC Executive Board". **The Council approved** this proposal by votes:

YES	49
NO	5

The Council voted on the options 1 and 2. The result of the voting was:

Option 1	5
Option 2	49

The Council approved Option 2: A one year term of Office. This year would be served in the third year of an Executive Board. This option would be linked with reduction to a two year term of Office for the Past President, who would serve for the first two years of an Executive Board. (The first President Elect would hold Office from January 2017 and replace the Past President who would hold Office from January 2015 until December 2016)

10. METHOD OF ELECTING EXECUTIVE BOARD

Proposal to change the method of electing Officers and Members of the Executive Board from a vote held at Council to an electronic vote held no later than three months before the commencement of the new Executive Board. (If accepted this change would come into effect for the Executive Board elected to hold Office from January 2015)

The Current Electoral Process for the Executive Board

The current process for electing the IFCC Executive Board (except Past President and Corporate Member Representative) is described in detail in the Rules of IFCC. These Rules are to be found on Pages 184-186 of the current issue of the IFCC

Handbook and may also be accessed from the IFCC website (www.ifcc.org click Publications; IFCC Handbook 2009-2011; Chapter 14).

In summary election is via a physical vote held during the IFCC Council Meeting. Each Full Member national society has one vote, which is normally cast by the National Representative. In the event that the National Representative is unable to attend the Council Meeting it is possible for a Full Member to appoint, in advance, a nominated proxy to cast its votes.

Postal and Electronic Ballots

IFCC currently uses a postal ballot of Full Member national societies to elect new Full Members. IFCC does not currently have the technology to conduct secure electronic ballots but this technology will be incorporated into the new IFCC website, which will be available from 2011.

If Agenda Item 10 is approved the timing states that the electronic ballot will be held no later than three months before the commencement of the new Executive Board. This means that the result need not necessarily be announced at Council. For instance, if the Council meeting is held in the first six months of the year (as in 2011) then the ballot could be conducted in August and the result announce electronically no later than 30 September.

Note: The method of electing the Executive Board is explained in the IFCC Rules not the IFCC Statutes. The Executive Board has powers to change the IFCC Rules. Therefore, if Council approves this proposal the Executive Board will make the necessary amendment to the IFCC Rules to permit the electronic election of the next Executive Board.

The Council approved the proposal. The result of the voting was:

YES 41
NO 0

11. MEMBERSHIP FEE

Proposal to increase the baseline IFCC membership fee from 6.0 to 6.5 Swiss Francs per member of each Full Member society with effect from 1 January 2012.

Income from Membership Subscriptions

The fee for membership as a Full Member of IFCC is based on a per capita charge of members in the Full Member national society. This per capita charge has been fixed at 6.0 Swiss Francs since 1999. In the intervening 12 years this income has lost approximately 30% of its income in real terms.

At the time of writing IFCC has 84 Full Member national societies. Based on the most recent census returns from these Full Members the anticipated income to IFCC from membership fees in 2011 will be: 211,170 Swiss Francs (based on 6.0 Swiss Francs per capita).

If Agenda Item 11 is approved the income to IFCC from membership fees in 2012, using the same census numbers, will be 228,767 Swiss Francs (based on 6.5 Swiss Francs per capita)

If Agenda item 11a is approved the application of the differential membership subscription will mean that the income to IFCC from membership fees in 2012, using the same census numbers, will be 220,905 Swiss Francs.

World Bank Classification of IFCC Full Member Countries

Classification is based on the national income of each country per capita (see <http://databank.worldbank.org>)

High Income (H)

Australasia
Austria
Belgium
Canada
Croatia
Cyprus
Czech Republic
Denmark
Estonia
Finland
France
Germany
Greece
Hong Kong
Hungary
Iceland
Ireland
Israel
Italy
Japan
Korea

High Income (H)

Kuwait
Latvia
Luxembourg
Netherlands
Norway
Poland
Portugal
Singapore
Slovakia
Slovenia
Spain
Sweden
Switzerland
Taipei
United Kingdom
United States of America

Lower Middle Income (LM)

China PR
Ecuador
Egypt
Guatemala
Honduras

Upper Middle Income (UM)

Albania
Algeria
Argentina
Bosnia Herzegovina
Brazil
Bulgaria
Chile
Colombia
Costa Rica
Cuba
Dominican Republic
Iran
Lebanon
Lithuania
Macedonia
Malaysia
Mexico
Montenegro
Peru
Romania
Russia

Upper Middle Income (UM)

Serbia
South Africa
Turkey
Uruguay

Low Income (L)

Ethiopia
Kenya
Vietnam

India
Indonesia
Jordan
Morocco
Nigeria
Pakistan
Paraguay
Philippines
Sri Lanka
Sudan
Syria
Thailand
Tunisia
Ukraine

The Council approved the proposal. The result of the voting was:

YES 39

NO 0

- 11a. Supplementary proposal if the proposal in Agenda item 11 is approved. Council will be invited to vote on the introduction of a differential membership fee with effect from 1 January 2012. The supplementary proposal is that the baseline membership fee of 6.5 Swiss Francs per member of each Full Member Society should be discounted to:
- 6.0 Swiss Francs per member for Upper Middle Income countries as defined by the World Bank
 - 5.5 Swiss Francs per member for Lower Middle Income countries as defined by the World Bank
 - 4.0 Swiss Francs per member for Low Income countries as defined by the World Bank (See Appendix 3).

The Council approved the proposal. The result of the voting was:

YES 53

NO 0

12. OTHER BUSINESS

Other Business notified at least one month in advance to the IFCC Secretary
No items had been notified to the IFCC Secretary.

GB announced the 2017 WorldLab to be held in Durban, South Africa. He also informed of 200th anniversary of Paraguay.

13. GENERAL DISCUSSION

There was no general discussion

14. **INFORMAL WORKSHOPS**

Arrangements for informal session of workshops to be held after the lunch break
Graham Beastall informed the participants of the informal sessions of workshops.

Graham Beastall closed the meeting at 12.30pm.

SIGNATURES

The above Minutes were approved on behalf of the IFCC Executive Board:

Graham Beastall
President

Päivi Laitinen
Secretary
