

Advancing excellence in  
laboratory medicine  
for better healthcare  
worldwide



**IFCC**

*International Federation  
of Clinical Chemistry  
and Laboratory Medicine*

The IFCC is a worldwide, non-political organization for Clinical Chemistry and Laboratory Medicine.

Among its aims:

1. Establishing global standard setting in collaboration with other international organizations;
2. Supporting its members through scientific and educational endeavour;
3. Providing a series of congresses, conferences and focused meetings in order for laboratory medicine specialists to meet and present original findings and best practice.

- Proposal of Prof. Earl J King, Royal Postgraduate Medical School London: Emerging national societies of clinical chemistry to organise into an international body.
- International Association of Clinical Biochemists, Founded July 24th 1952 – Paris, under the auspices of International Union of Pure & Applied Chemistry (IUPAC)
- Renamed International Federation of Clinical Chemistry (IFCC) in 1955 in Brussels as a Section of IUPAC
- IFCC became an independent body in 1967 and Associate Member of IUPAC
- Name updated to International Federation of Clinical Chemistry and Laboratory Medicine (IFCC) in 1997

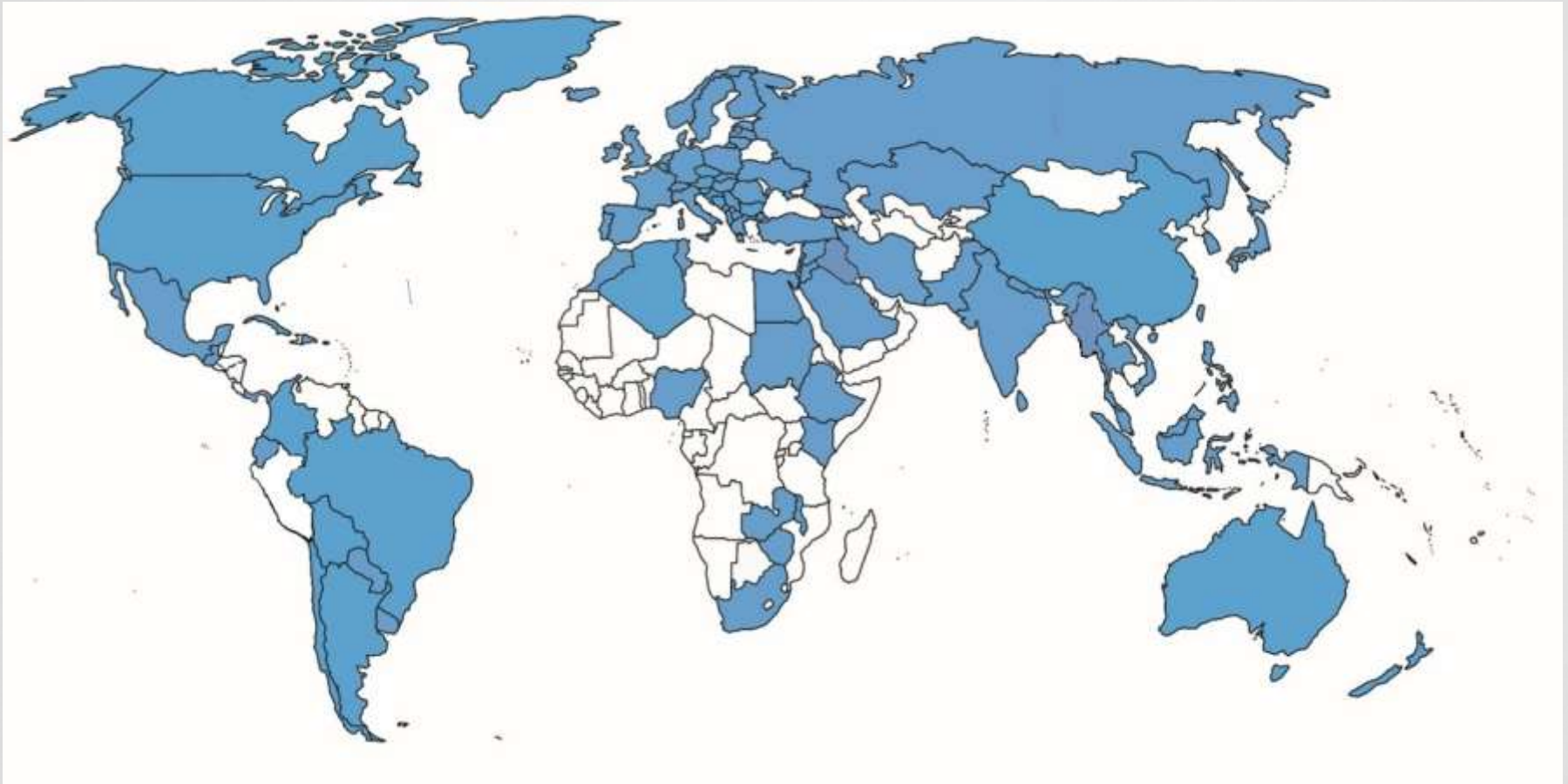
- 93 Full Members
- 17 Affiliate Members
- 6 Regional Organizations
  - Arab Federation of Clinical Biology (AFCB)
  - African Federation of Clinical Chemistry (AFCC)
  - Asia-Pacific Federation for Clinical Biochemistry and Laboratory Medicine (APFCB)
  - European Federation of Clinical Chemistry and Laboratory Medicine (EFLM)
  - Latin American Confederation of Clinical Biochemistry (COLABIOCLI)
  - North American Federation for Clinical Chemistry and Laboratory Medicine (NAFCC)
- 49 Corporate Members



# Full members of IFCC

(March 2020)

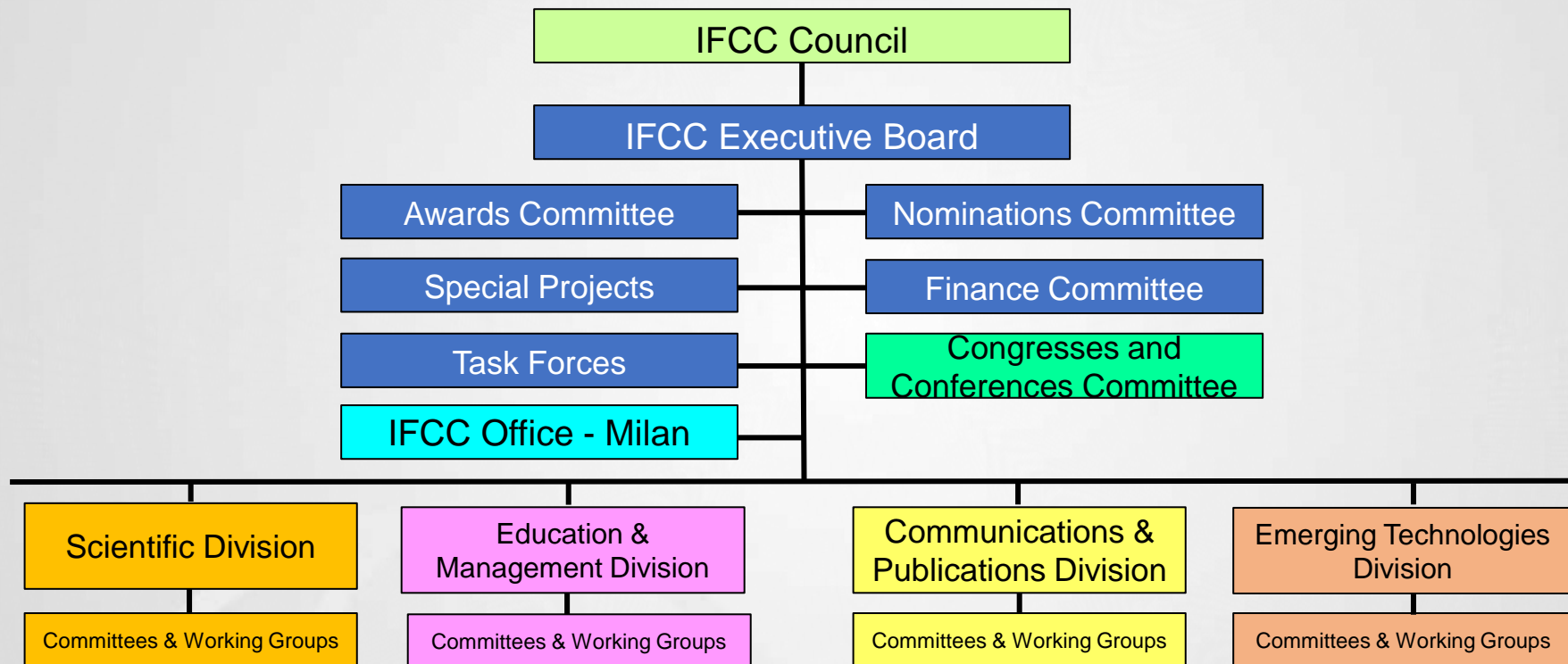
4



**45,000 Laboratory specialists**  
**93 Full members & 17 Affiliates**

## Advancing excellence in laboratory medicine for better healthcare worldwide

- Enhance the scientific level and quality of diagnosis & therapy for all patients;
- Build on member professionalism to provide quality services to patients;
- Communicate with members, healthcare providers & public on leading, innovative scientific & educational achievements;
- Focus on scientific standards, publications, education & communications;
- Organise congresses & conferences to bring the efforts of IFCC to the global community.



## The Major objectives of the Strategic Plan are to:

- Support the scientific, educational and communication needs of IFCC Members
- Support quality improvement in laboratory medicine in developing countries
- Improve collaboration between IFCC and its Regional Federations
- Demonstrate leadership in method standardisation of clinically important biomarkers
- Introduce and develop the IFCC e-Academy as a platform for distance learning support
- Collaborate with international clinical organisations to increase understanding of the impact of laboratory medicine on clinical outcomes
- Promote laboratory medicine and IFCC through international and regional congresses
- Encourage debate on 'shaping the future of laboratory medicine' at national and international level
- Develop and maintain Public Relations.





**Khosrow  
ADELI**  
President



**David  
KINNIBURGH**  
Secretary



**Alexander  
HALIASSOS**  
Treasurer



**Joseph PASSARELLI**  
Corporate  
Representative

**REGIONAL REPRESENTATIVES**



**AB OKESINA**  
African  
Federation of  
Clinical Chemistry  
(**AFCC**)



**A. HEDHILI**  
Arab  
Federation of  
Clinical Biology  
(**AFCB**)



**S. SETHI**  
Asia-Pacific Fed  
for Clin Biochem  
and Lab Med  
(**APFCB**)



**AM ŠIMUNDIĆ**  
European Fed of  
Clin Chem and  
Lab Medicine  
(**EFLM**)



**AM LENA RODRIGUEZ**  
Latin-American  
Confederation of Clin  
Biochemistry  
(**COLABIOCLI**)



**S. HILL**  
North American  
Fed of Clin  
Chem and Lab  
Med (**NAFCC**)

**Mission: To advance the science of clinical chemistry and apply it to the practice of clinical laboratory medicine**

**Chair: Prof. Philippe Gillery (FR)**

**Strategy:**

- Assist transfer of research into practice
- Provide solutions to scientific and technological problems
- Develop diagnostic strategies
- Establish standards for good laboratory practice
- Respond to scientific needs of Members
- Ensure quality in IFCC scientific documents
- Participate in congresses and scientific meetings
- Organise Master discussions

- Nomenclature, Properties and Units (C-NPU) in collaboration with IUPAC
- Molecular Diagnostics (C-MD)
- Traceability in Laboratory Medicine (C-TLM)
- Reference Intervals and Decision Limits (C-RIDL)
- Standardization of Thyroid Function Tests (C-STFT)
- Harmonization of Autoimmune Tests (C-HAT)
- Bone Metabolism (C-BM)

- Standardisation of:
  - Hemoglobin A2 (WG-HbA2) Joint Working Group with ICSH (International Council for Standardization in Haematology)
  - Albumin Assay in Urine (WG-SAU) in collaboration with NKDEP
  - Pregnancy-Associated Plasma Protein A (WG-PAPPA)
  - Growth Hormone (WG-GH)
  - Insulin Assays (WG-SIA) in collaboration with ADA/EASD
  - Troponin I (WG-TNI)
  - Procalcitonin assays (WG-PCT)
- Carbohydrate-Deficient Transferrin (WG-CDT)
- CSF-Proteins (WG-CSF)
- Commutability in Metrological Traceability (WG-CMT)
- Immunosuppressive Drugs (WG-ID)
- Apolipoproteins by Mass Spectrometry (WG-APO MS)
- Pancreatic Enzymes (WG-PE)
- Fecal Immunochemical Testing (WG-FIT)
- Cell free DNA (WG-cfDNA)
- Continuous Glucose Monitoring (WG-CGM)



**Mission: To facilitate the development of managerial skills and support educational activities in laboratory medicine.**

Chair: Nader Rifai (US)

### Strategy:

- Provide educational materials for publication
- Promote analytical quality and laboratory management
- Promote evidence-based laboratory medicine
- Education and curricula development
- Provide support to developing countries

### Projects:

- Clinical molecular biology courses
- Distance learning programmes
- Flow Cytometry Course
- Visiting Lecturer Programme (VLP)



## COMMITTEES

- Clinical Molecular Biology Curriculum (C-CMBC)
- Evidence-Based Laboratory Medicine (C-EBLM)
- Clinical Laboratory Management (C-CLM)
- Education in the Use of Biomarkers in Diabetes (C-EUBD)
- Clinical Applications of Cardiac Bio-Markers (C-CB)
- Chronic Kidney Disease (Integrated Project) - (C-KD)
- Point of Care Testing (C-POCT)
- Value Proposition for Laboratory Medicine (C-VPLM)

## Working Groups and Special Projects

- Laboratory Errors and Patient Safety (WG-LEPS)
- Flow Cytometry (WG-FC)
- Harmonisation of Interpretive Comments EQA (WG-ICQA)
- Personal Support (WG-PS)



Mission: **Communication of all activities of the IFCC**

Chair: Prof Tahir Pillay (ZA)

Strategy:

- Publishes the eJIFCC (web-based)
- Coordinates the eAcademy
- Publishes IFCC recommendations, documents & monographs
- Coordinates SD & EMD peer reviewed publications
- Publishes SD & EMD project outcomes
- Manages the IFCC Website - [www.ifcc.org](http://www.ifcc.org)
- Publishes the IFCC eNewsletter and the eNews Flash
- Enhances IFCC Public Relations
- Manages IFCC Social Media

## Committees

- Public Relations (C-PR)
- Internet and eLearning (C-leL)

## Working Groups

- Electronic IFCC Journal (WG eJIFCC)
- IFCC eNews (WG-IFCC News)
- Ibero-American Nomenclature and Translations (WG-IANT)



**Chair: Sergio Bernardini (IT)**

**Mission:**

The ETD is a functional unit responsible for identifying and assessing emerging technologies and for translating the emerging and disruptive diagnostic and data analysis procedures from academic laboratories to clinical laboratories and from clinical laboratories to market.

**Strategy:**

The ETD initiates and manages projects through its Committees and Working Groups (WG). Work is conducted in strict cooperation with other IFCC units and with relevant national and international organisations. The ETD ensures that each of its Committees and Working Groups are functioning under clear terms of reference together with an agreed upon schedule of activity. The ETD will assist in the development of project proposals and will undertake an annual review of progress and review as well as approve documents arising from such projects.

## Committees

- Emerging Technologies in Pediatric Laboratory Medicine (C-ETPLM) (previously Task Force on Paediatric Laboratory Medicine –TF-PLM).
- Mobile Health and Bioengineering in Laboratory Medicine (C-MHBLM)
- Omics Translation (C-OT)

## Working Groups

- Volatolomics (WG-Vol)
- Guidance for the implementation of custom-made genomic panels (WG-CGP)
- Artificial Intelligence and Genomic Diagnostics (WG-AIGD)
- Single Cell and Spatial Transcriptomics (WG-SCST)



Chair: Päivi LAITINEN (FI)

### Mission

The mission of the C-CC is to provide general administration and management of all IFCC meeting activities (congresses, conferences, and symposia) and to review applications for IFCC auspices from non-IFCC conferences requesting such sponsorship.

### Strategy

The C-CC supports and promotes Clinical Laboratory Sciences through congresses, conferences, specialised meetings, and other professional meetings. The C-CC Works closely with the organisers of the various IFCC related conferences to ensure that they achieve organisational and professional excellence.

2021 **EuroMedLab** Munich (DE)



2022 **WorldLab** Seoul (KR)



2023 **EuroMedLab and WorldLab** Rome (IT)



## Regional Congresses

- 2021: **AFCB** Beirut (LB) - **AFCC** Lusaka (ZM)
- 2022: **COLABLIOCLI** Leon (MX) - **APFCB**: Sidney (AU)

- Task Force on Ethics (TF-E)
- Task Force for Young Scientists (TF-YS)
- Task Force Corporate Members (TF-CM)
- Task Force on History (TF-H)
- Task Force on Covid-19 (TF-COVID-19)
- Task Force on Global Newborn Screening (TF-NBS)
- Task Force on Global Lab Quality (TF-GLQ)
- Taskforce on Global eLearning/eAcademy (TF-GEL)

- IFCC Reference Materials
- IFCC Distinguished Awards
- IFCC eAcademy
- Distance Learning Programme (IFCC Webinars)
- IFCC Abbott Visiting Lecturer Programme (VLP)
- Professional Scientific Exchange Programme (PSEP)
- Professional Management Exchange Programme (PMEP)
- IFCC Speaker's Bureau
- IFCC Roche Travel Scholarships

## IFCC Webinars

# Live Series 2021



[www.ifcc.org](http://www.ifcc.org)

Distance-learning /eLearning is offered via both live and recorded webinars .

This is an important way by which IFCC can give back to the national societies and their members around the world.

IFCC will strive to be the largest provider of free eLearning programs in the field of laboratory medicine globally.

IFCC recently piloted a LIVE WEBINAR Series.

### IFCC Webinar Program in 2021

In 2021, the IFCC webinar program will be expanded. Do not miss next IFCC Live Webinars, subscribe to the IFCC Free mailing list to keep updated with IFCC initiatives.

- Supports international exchange of lecturers
- Creates global educational networks
- Brings together IFCC activities in different regions
- Supported by Abbott



- Promote international co-operation between laboratories
- Facilitate the exchange of young laboratory scientists between IFCC Member societies
- Share high level scientific or management skills
- Introduce new or improved scientific or management skills to the applicant's laboratory



- Listing of IFCC members accessible for presentations, seminars or media comments
- Professional expertise
- Specific topics of interest
- Approved by IFCC EB as spokespersons

IFCC is a worldwide non-political professional organization for the clinical chemistry and laboratory medicine community

- Major organization linking clinical chemistry societies and federations worldwide
- Major body involved in development of standards in laboratory diagnostics
- Major venue for international exchange of scientific know-how in the field
- Major facilitator of education and communications in the field



# Thank you!

For further information visit  
[www.ifcc.org](http://www.ifcc.org)

